




An constructie: 2011  
8 camere

Supraf. utilă: 269 mp

## Localizare:

 Mapbox Map of -73.7638,42.6564

Potrivita pentru a fi locuita de catre o familie cu standarde inalte, dedicata persoanelor care apreciaza confortul si linistea.

Situata intr-o locatie deosebita, la limita dintre cartierele Fratelia, Sagului si Rebreanu, aproape de scolile generale 2, 9 si 13, casa versatila cu 8 camere+ garaj dublu, este ideala pentru a fi locuita de o familie numeroasa, totodata perfecta pentru camin de varstnici, unitate de invatamant (afterschool, gradinita, etc), clinica, sediu de firma dar si pentru alte destinatii, avand 670 mp teren, situata pe o strada putin circulata din zona Musicescu.

Configurata pe 3 nivele (demisol, parter si etaj), gandita astfel incat fiecarui nivel ii este sribuita o destinatie bine definite, astfel:

- Parter/ ZONA DE ZI: hol, living spatios/ dinning, bucatarie inchisa, birou/ biblioteca, baie, terasa acoperita, garaj pentru doua masini.

- Etaj/ ZONA DE NOAPTE: 3 dormitoare cu 3 dressinguri, doua bai, hol, balcon

- Demisol/ ZONA DE RELAXARE si HOBBY: sala pentru petreceri cu masa billiard, camera de relaxare, depozitare, spatiu tehnic.

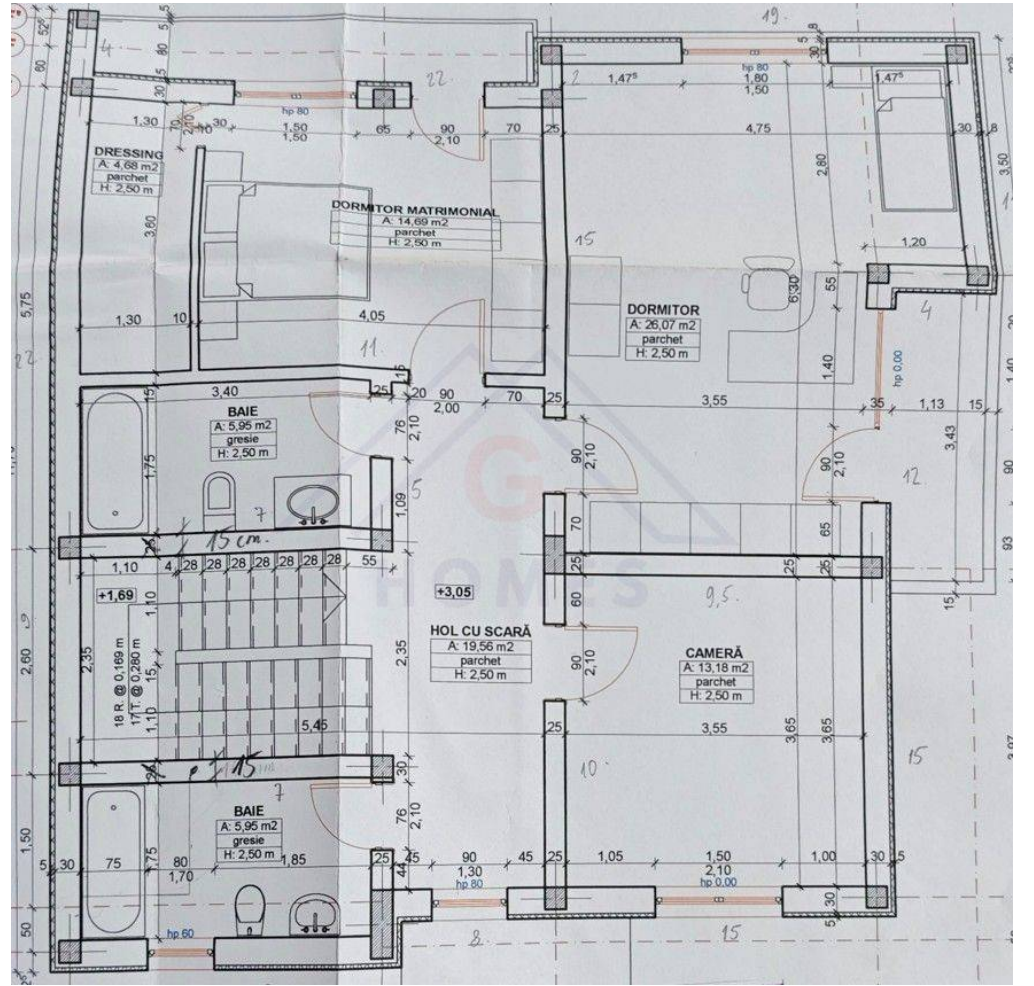
Pentru corecta intelegere a configuratiei casei, va invitam sa vizualizati planurile fiecarui nivel pe care le gasiti in cadrul pozelor atasate.

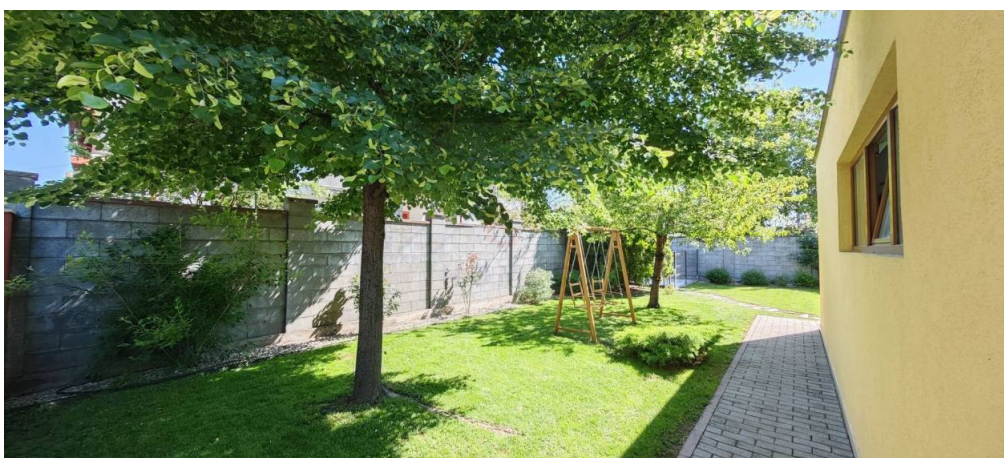
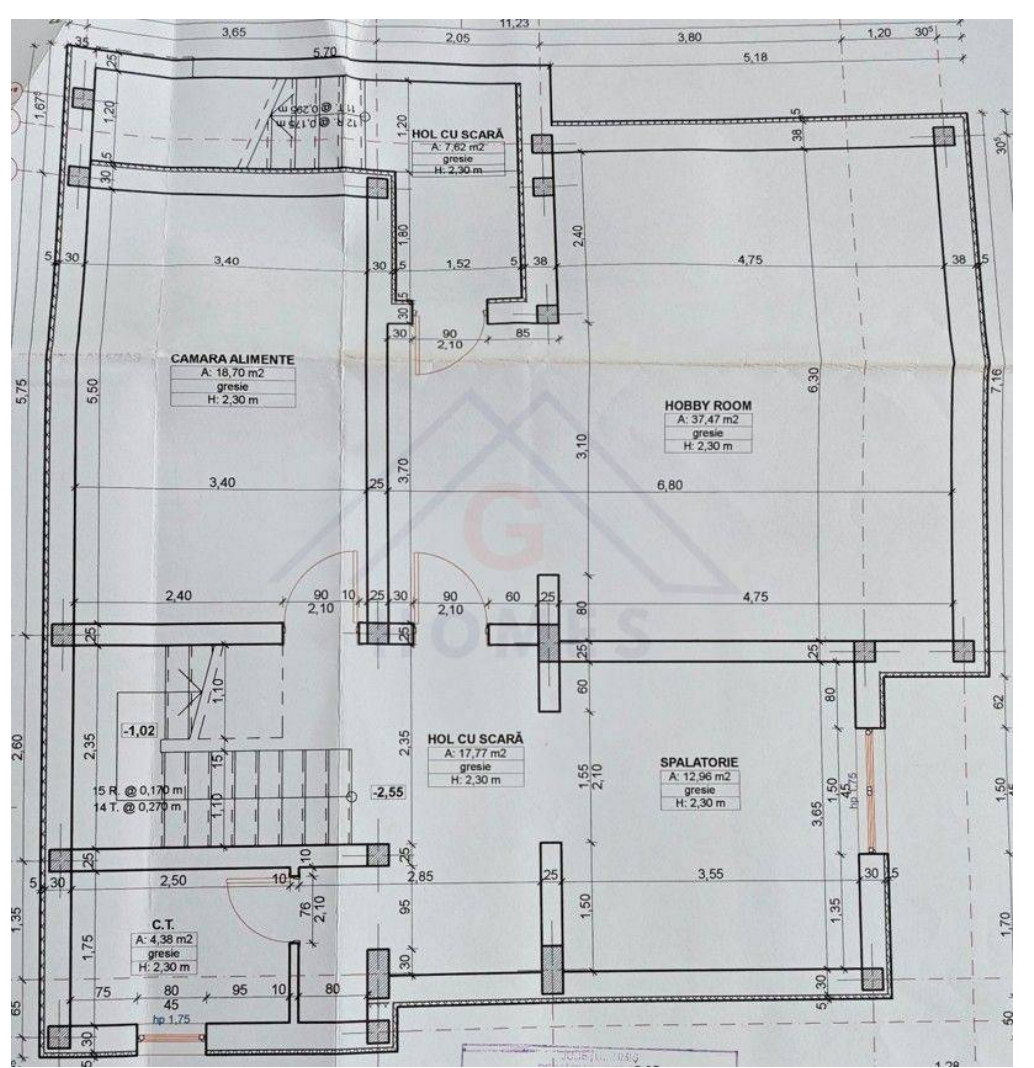
Casa este eficienta energetic fiind dotata cu panouri solare, pentru asigurarea confortului termic utilizandu-se centrala pe gaz si sistemul eficient de cillere. In plus, casa este izolata cu termosistem.

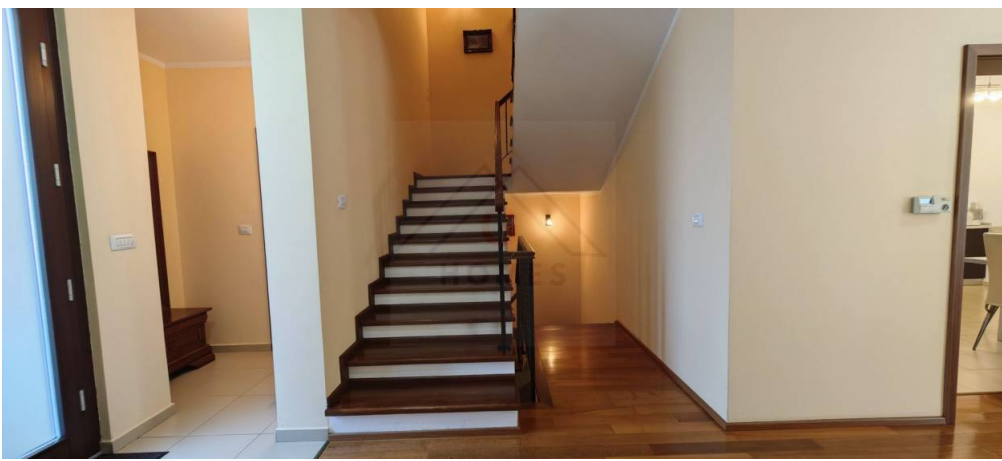
Constructia este bine executata/ solida, construita cu materiale de calitate si a fost ridicata de catre un cunoscut antreprenor din domeniul constructiilor pentru a fi locuita de catre familia acestuia. Pentru finisajele clasice au fost, de asemenea, selectate numai material de calitate superioara.

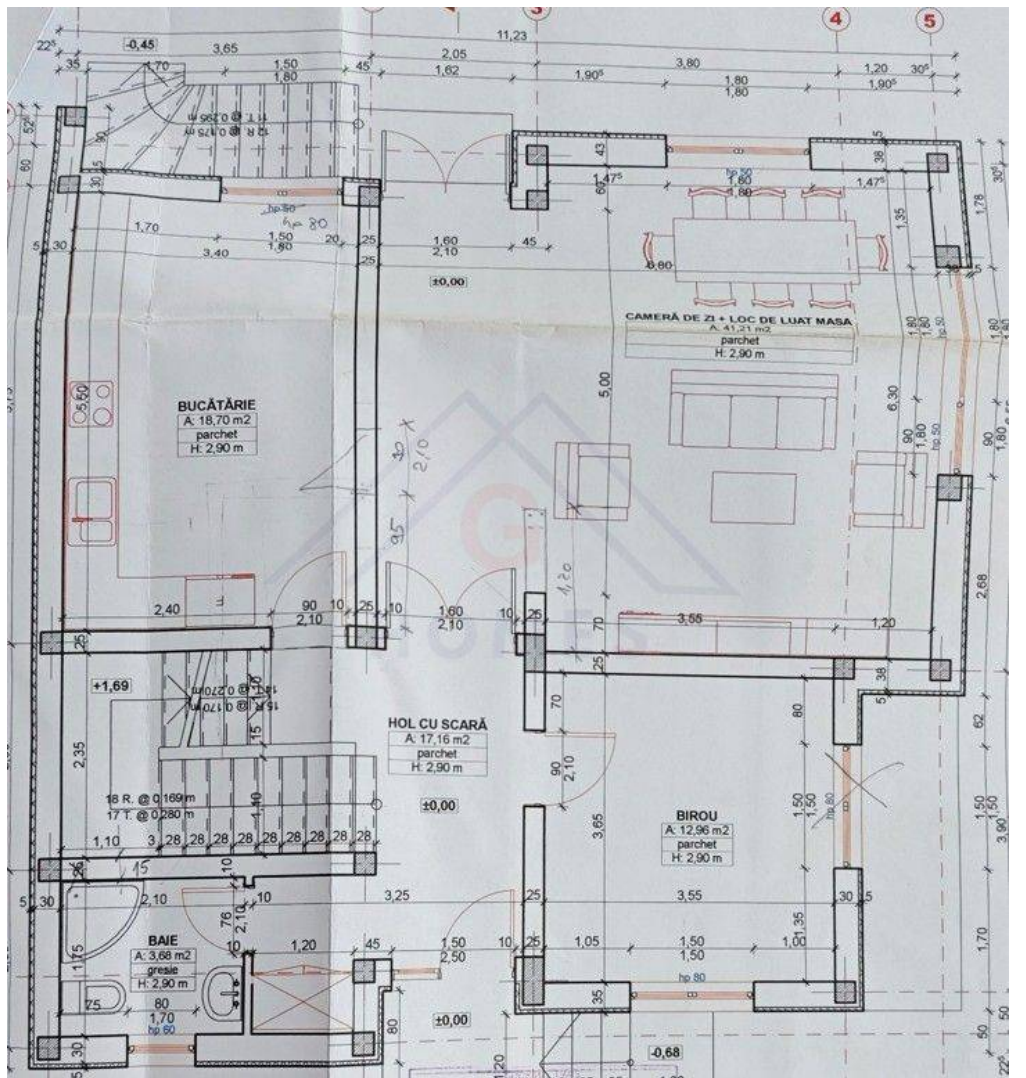
Raspundem cu placere intrebarilor dumneavoastra. Pentru informatii suplimentare si pentru a planifica o vizionare, va invitam sa ne contactati telephonic, fara ezitare!

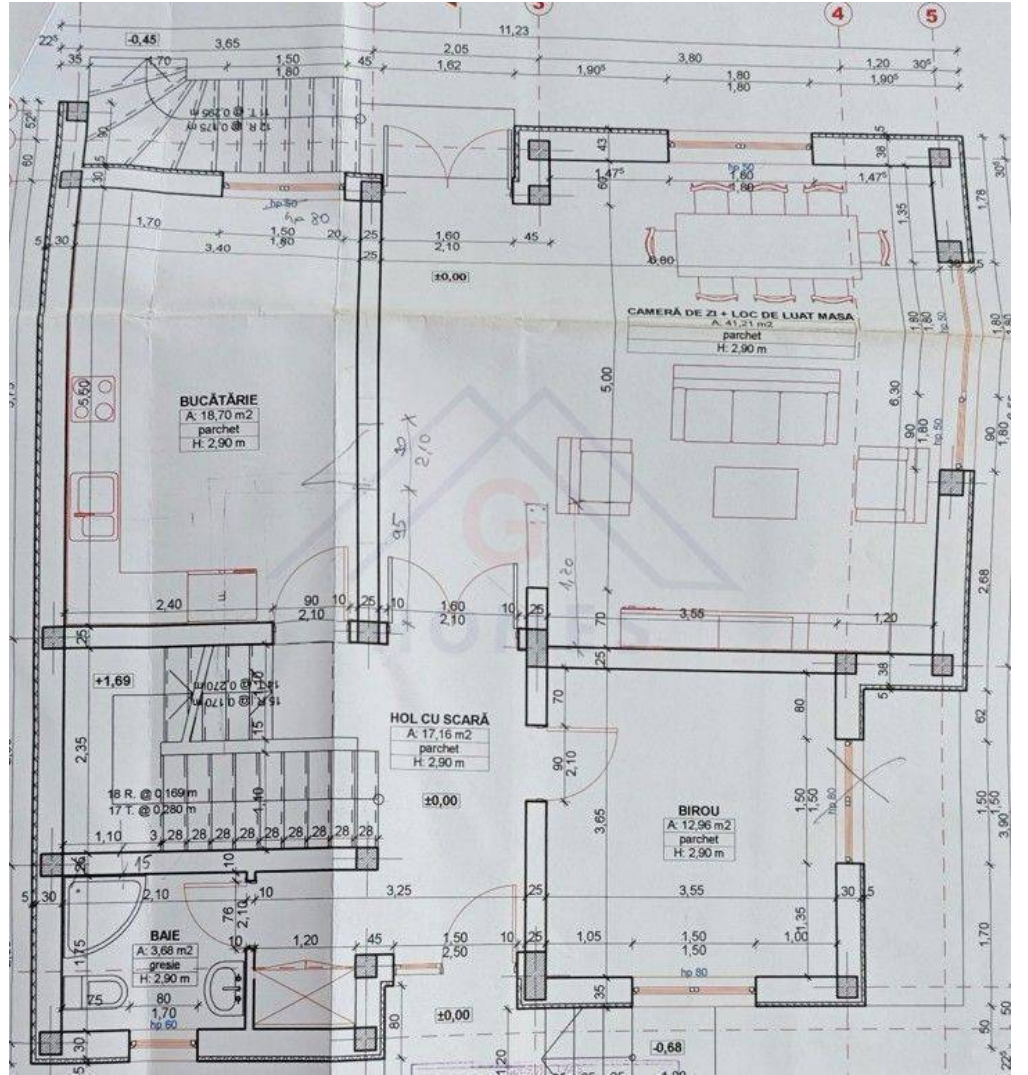
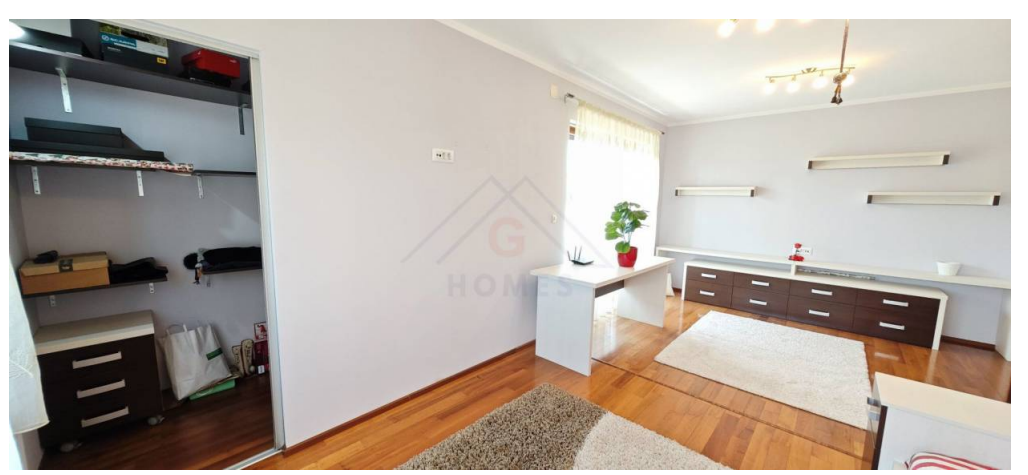
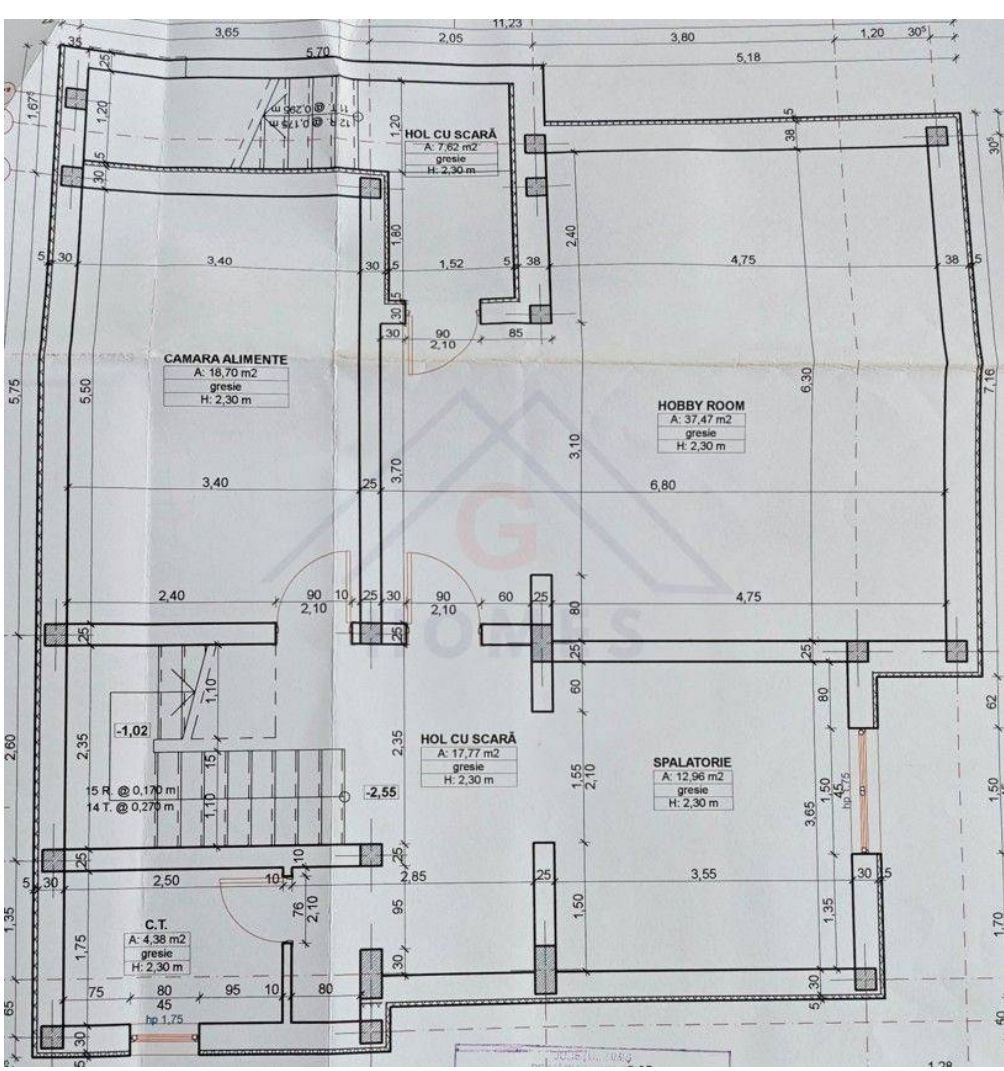
# Poze

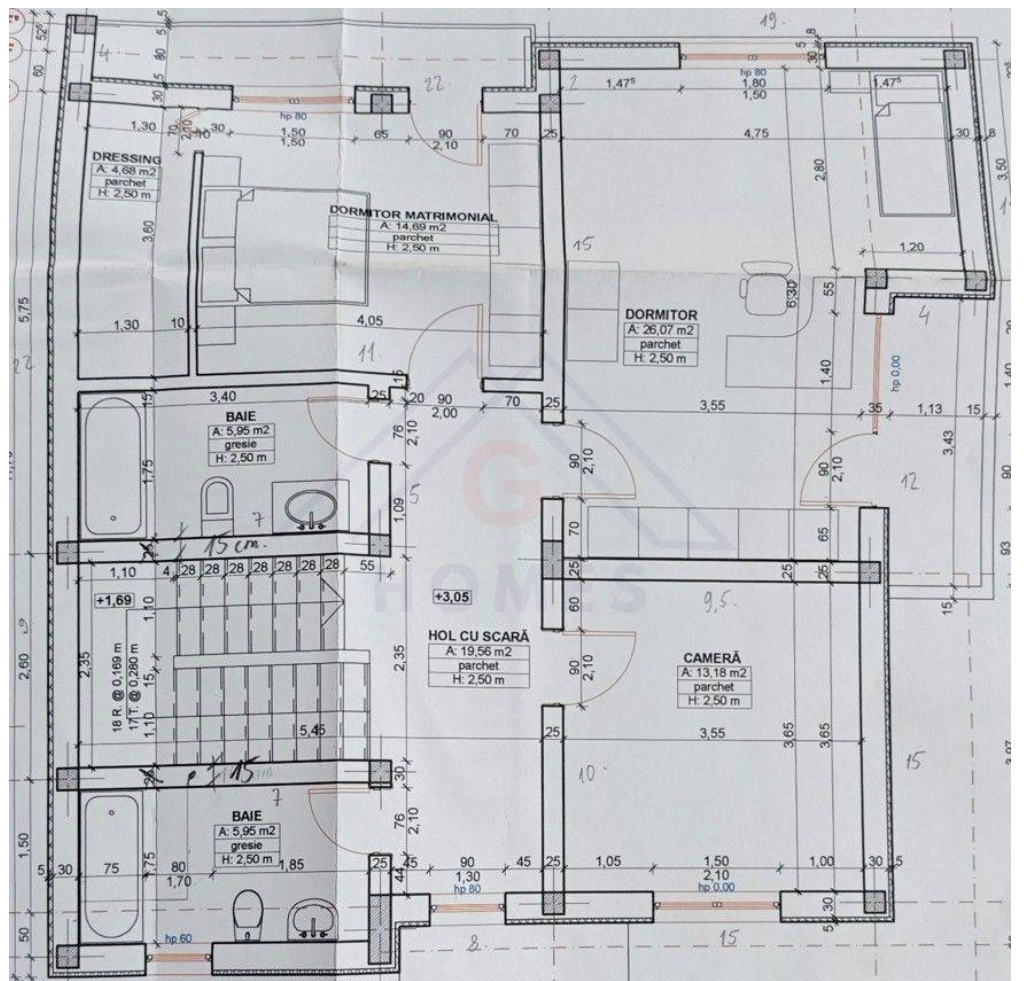
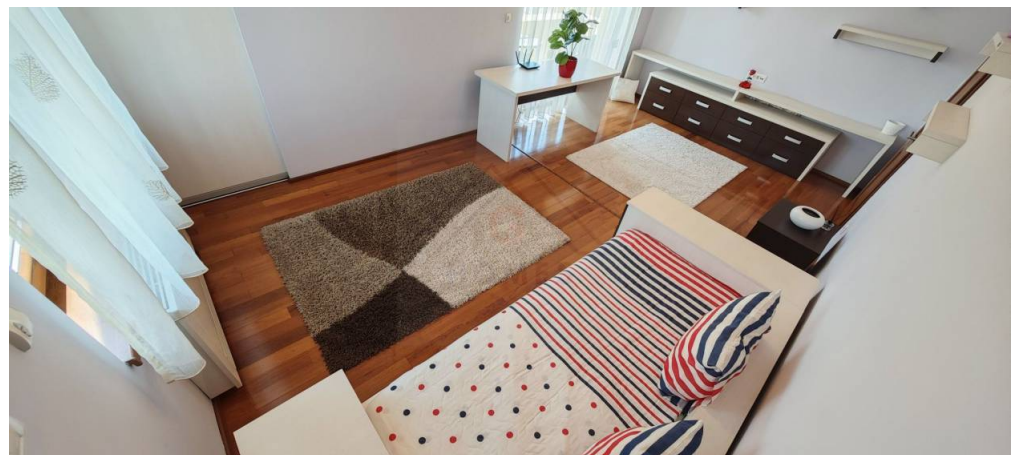


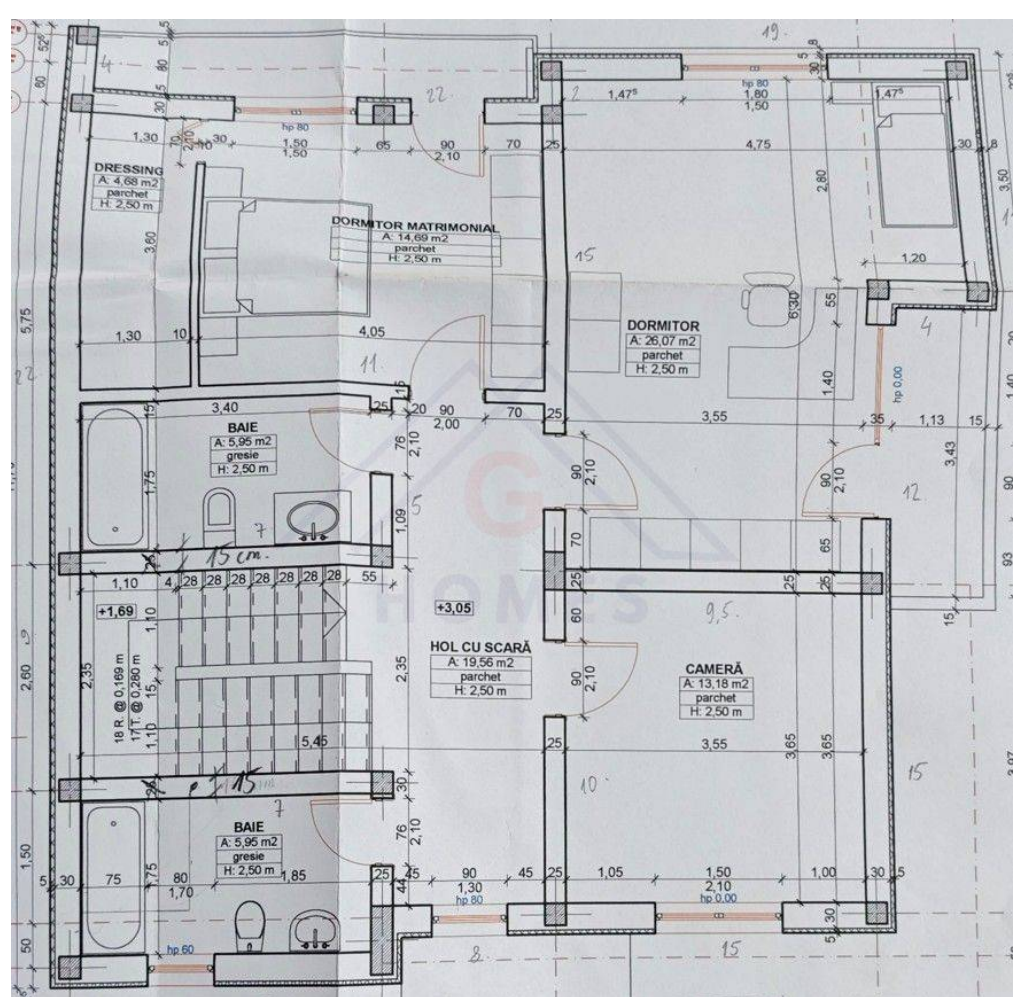








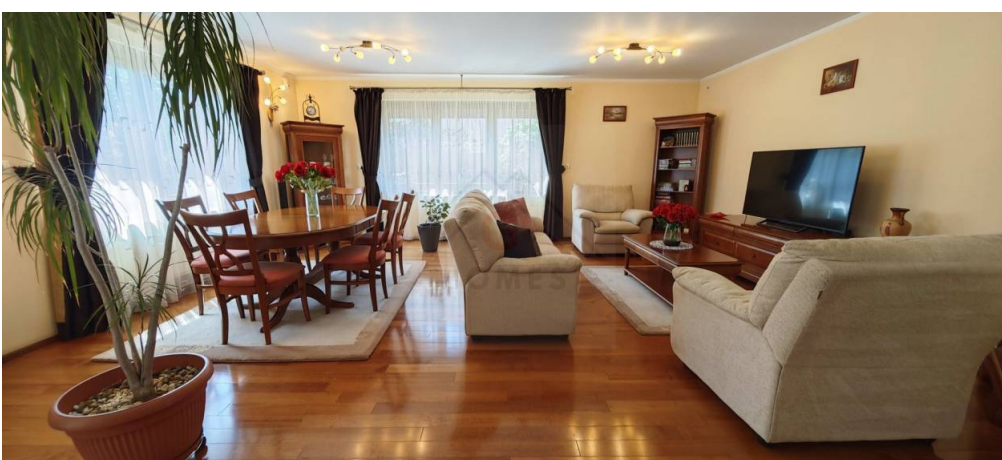
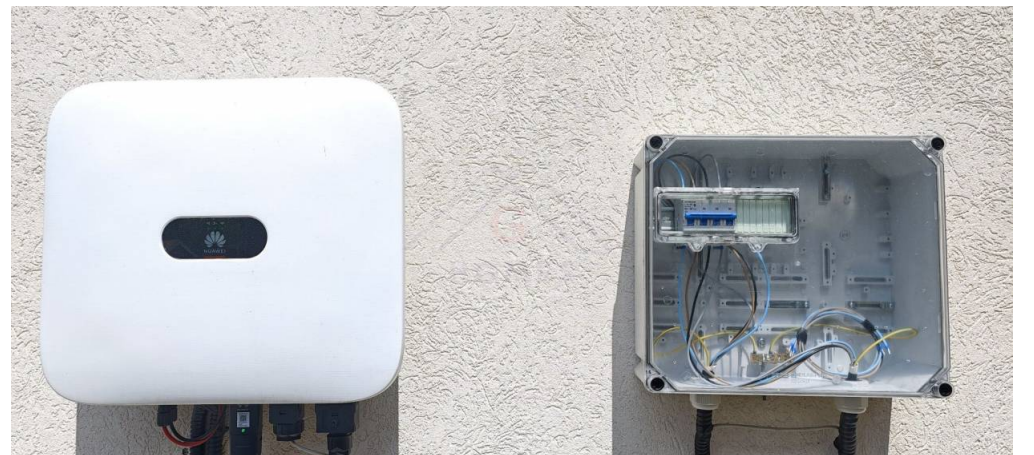


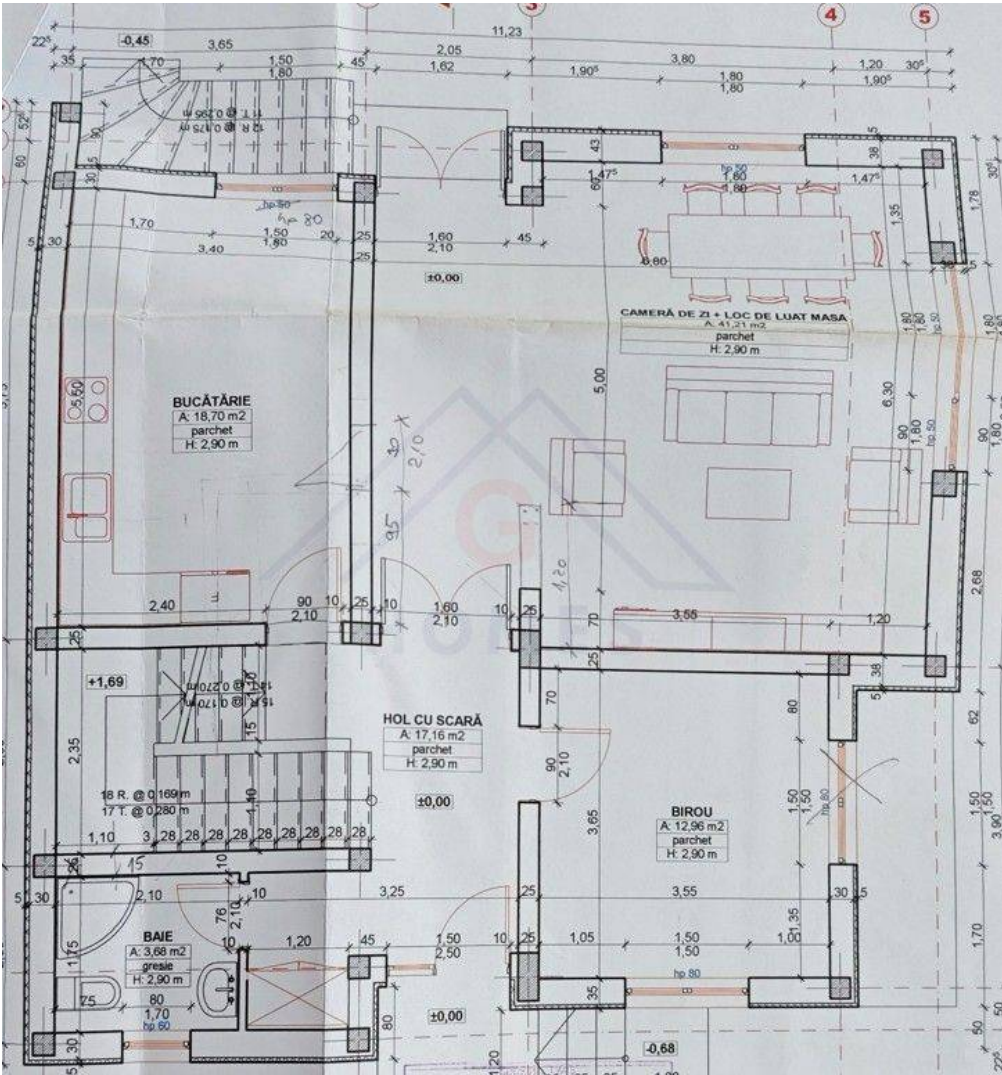


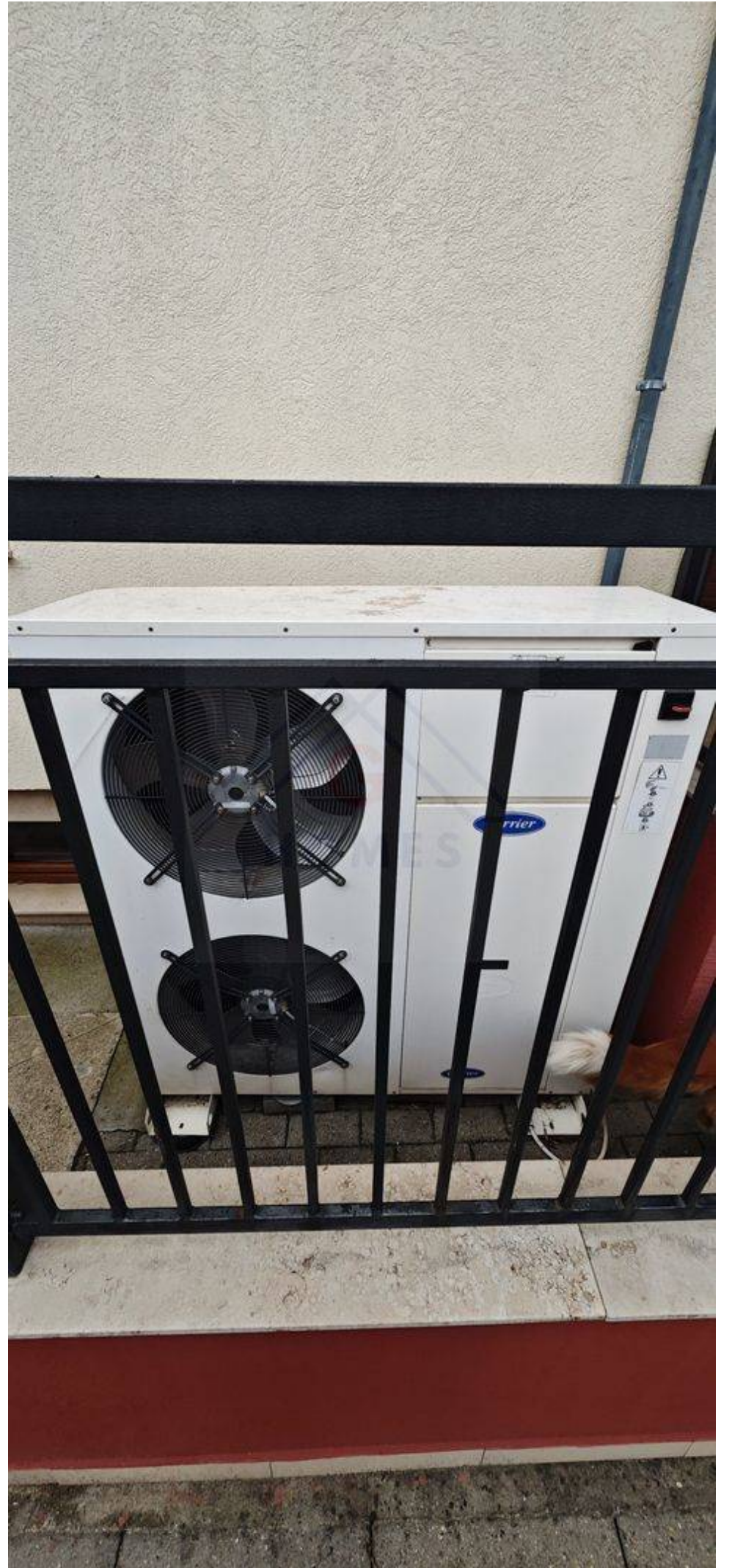
**DE VANZARE. COMISION ZERO!**

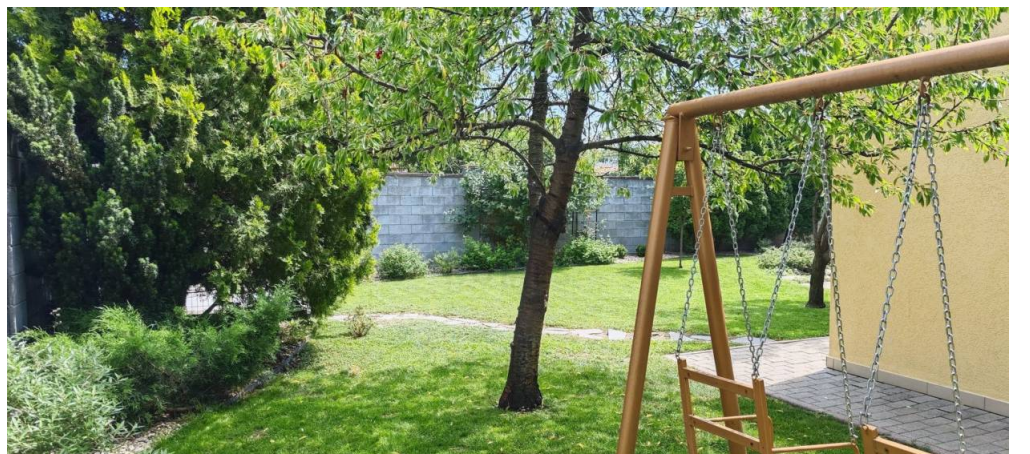
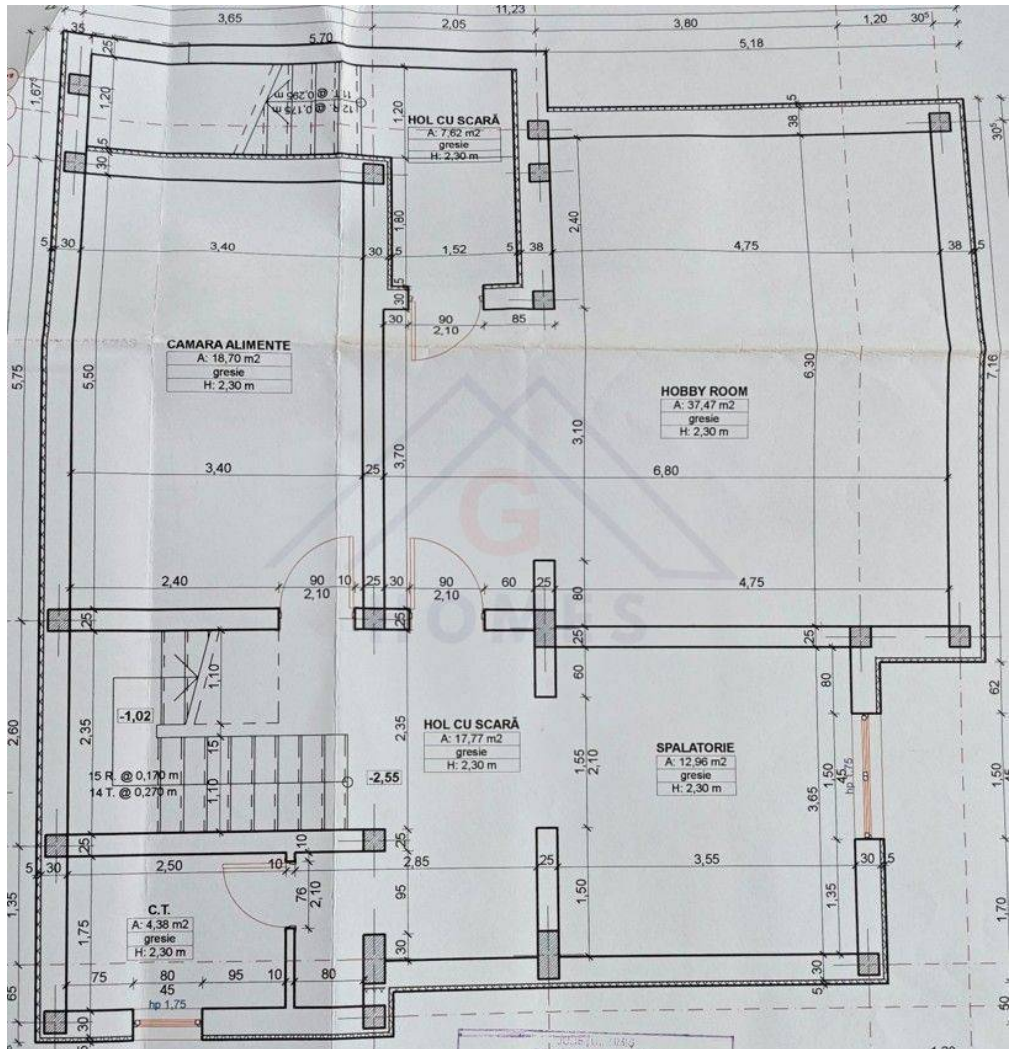
Casa spatioasa. Pretabil si pt. clinica, invatamant, camin varstnici.

📍 Sagului 🏠 268mp 🏗️ 2010









## DE VANZARE. COMISION ZERO!

Casa spatioasa. Pretabil si pt. clinica,  
invatamant, camin varstnici.

📍 Sagului 📏 268mp 🏠 2010

